

# MF Eco machine Certification System, Certified Registration Status (Summary of 2010)

Japan Forming Machinery Association  
MF Eco machine Certification System Secretariat

\* Total Certified Registration: 19 companies (c), 33 products (p) and 122 models (m)

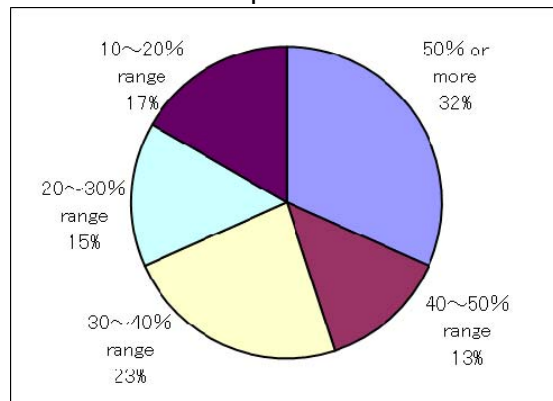
## 1. (Essential Requirements) Reduction of Energy Consumption

(1) No. of registration by product	(2) No. of registration by certification method
- Press machine : 14 c, 19 p, 60 m	- Single model certification: 11 c, 12 p, 12 m
- Fabricating machine : 8 c, 12 p, 57 m	- Series model certification: 15 c, 21 p, 110 m
- Automation equipment: 1 c, 2 p, 5 m	

### \* Energy Saving Criteria Achievement

<Base product → Certified product>
- <Mechanical press → Mechanical press> GP motor + Clutch & Flywheel → Servo motor drive
- <Hydraulic press → Hydraulic press> GP motor + Hydraulic pump → Servo motor (or Inverter control)+Hydraulic pump
- <Hydraulic press → Mechanical press> GP motor + Hydraulic pump → Servo motor + Ball screw
- Compressed air drive → Electric motor drive
- Improvement of plasma gas control method

### \* Power Consumption Reduction Ratio

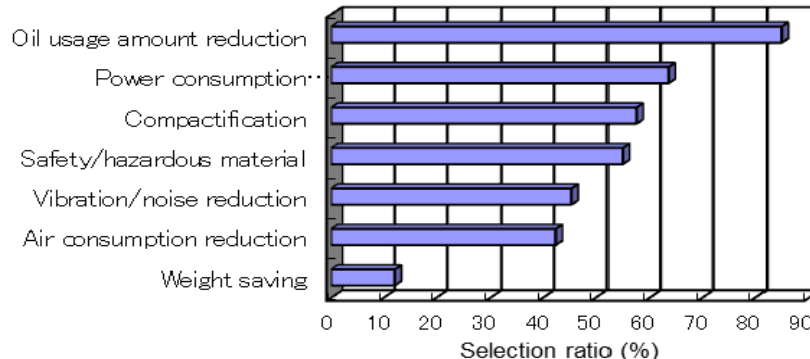


\* Power Consumption Reduction Ratio of New Delivery Eco Machines:49.0% and CO<sub>2</sub> Reduction:1729 ton

## 2. (Selective Requirements) Number of Selections and Breakdowns

Required number of selections = 3 items or more	Actual Results (Average) = 3.5 items
---	--------------------------------------

### Selections of Environment Factors



## 3. (Recommended Requirements) Effective Usage of Energy/Resource, Functions/Device of Environment Preservation/Safety and Environment Related Communication System

Required number of selections= 3 items or more	Actual results (Average) = 3.8 items
--	--------------------------------------

\* Examples of Recommended Functions/Device (standard equipped condition)

Main related items	Names of functions/device (see publicized data sheet for detail)
Energy saving (Power consumption reduction)	Servo motor drive, Servo hydraulic hybrid system, Inverter system, Power regeneration, Servo bulb control system, Energy saving timer, Auto-power shutoff, Energy saving circuit, LCD display, Servo motor driven feeding device, Improvement of gas control
Resource saving (Parts, Air & Oil reduction)	Servo motor drive, Servo hydraulic hybrid system, Inverter system, Electric operated bulb, Servo motor driven feeding device, Constant amount of oil circulation type
Environment preservation & safety	Light curtain, Double CPU circuit, Low noise table, Soundproofing & Vibration isolation device, Load monitor, Various monitoring functions (overrun, ram, stop), Current overflow protection
Information control & display	Maintenance counter, Remote maintenance telephone diagnosis